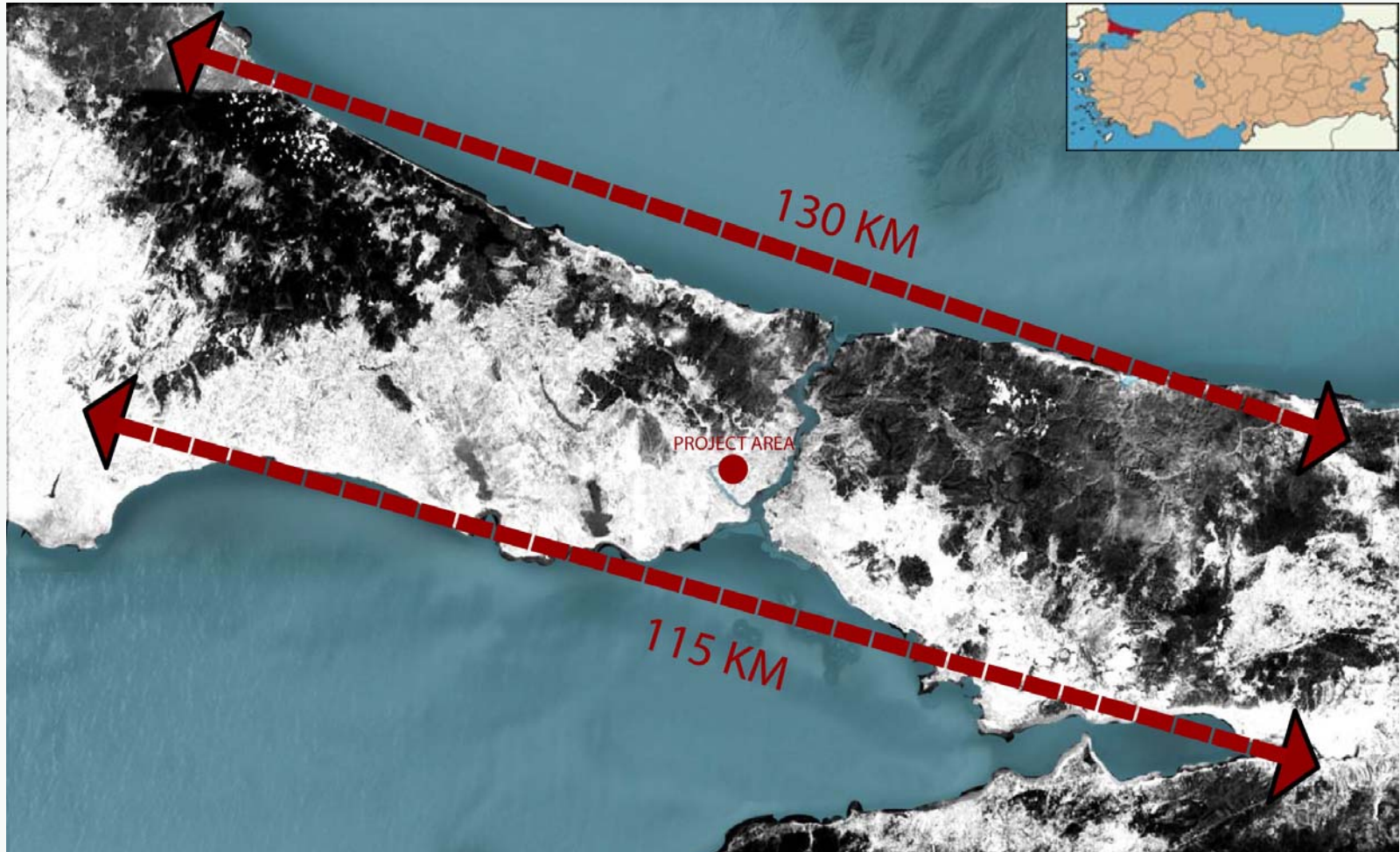


THE GOLDEN HORN SPATIAL DEVELOPMENT UPDATE / 2014

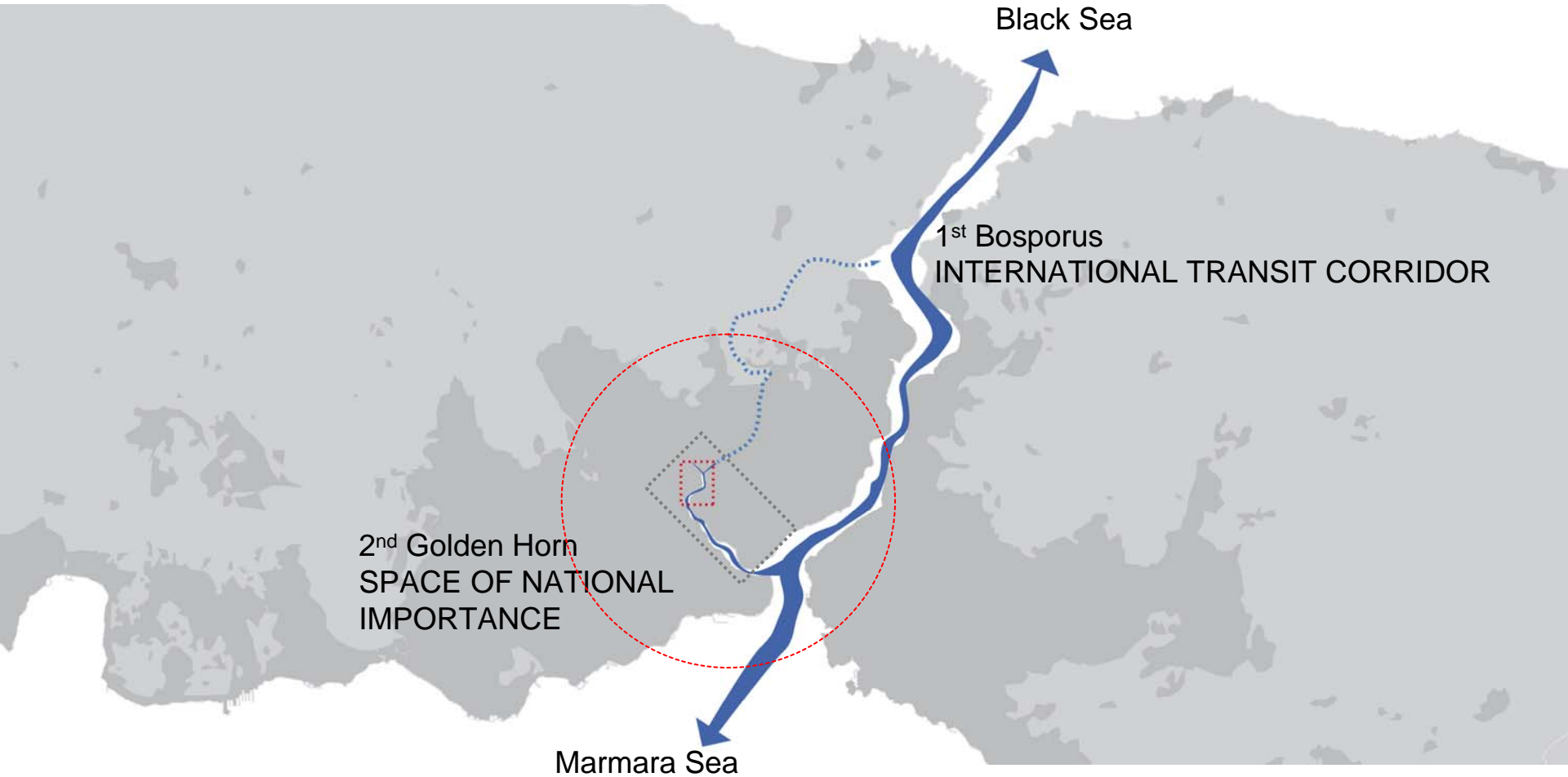


ISTANBUL – FINANCIAL AND CULTURAL CENTER OF TURKEY

Distances to the Border Province of Istanbul



GOLDEN HORN- AT THE HEART OF ISTANBUL



Black Sea

1st Bosphorus
INTERNATIONAL TRANSIT CORRIDOR

2nd Golden Horn
SPACE OF NATIONAL
IMPORTANCE

Marmara Sea

DISTRICTS SURROUNDING THE GOLDEN HORN



AERIAL VIEW OF THE GOLDEN HORN FROM KAĞITHANE



MARMARA SEA

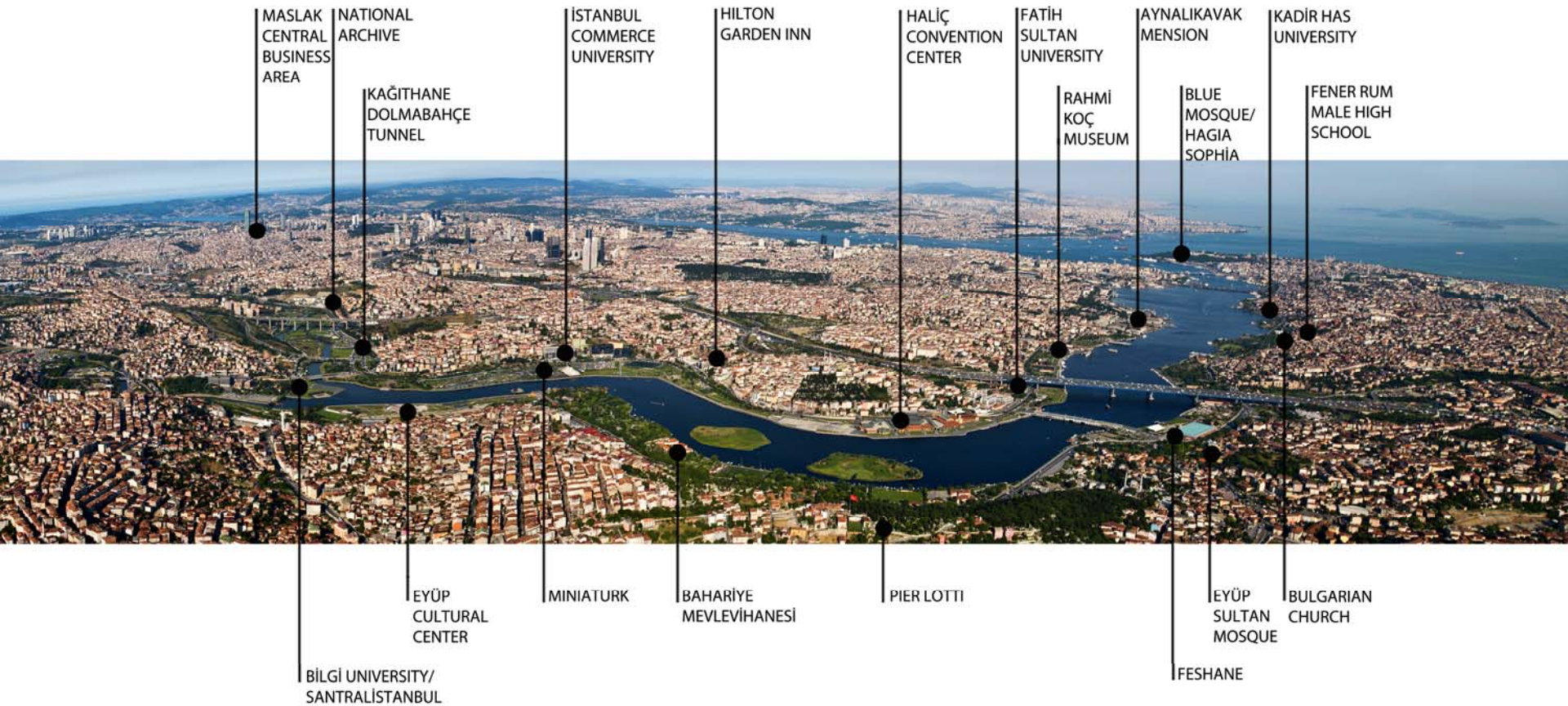
BOSPHORUS

HALIÇ

CENDERE CREEK

CEBECİ CREEK

TREASURES OF THE GOLDEN HORN



MASLAK
CENTRAL
BUSINESS
AREA

NATIONAL
ARCHIVE

KAĞITHANE
DOLMABAĞÇE
TUNNEL

İSTANBUL
COMMERCE
UNIVERSITY

HILTON
GARDEN INN

HALIÇ
CONVENTION
CENTER

FATİH
SULTAN
UNIVERSITY

RAHMI
KOÇ
MUSEUM

AYNALIKAVAK
MENSION

BLUE
MOSQUE/
HAGIA
SOPHIA

KADIR HAS
UNIVERSITY

FENER RUM
MALE HIGH
SCHOOL

BİLGİ UNIVERSITY/
SANTRAL İSTANBUL

EYÜP
CULTURAL
CENTER

MINIATURK

BAHARİYE
MEVLEVİHANESİ

PIER LOTTI

FESHANE

EYÜP
SULTAN
MOSQUE

BULGARIAN
CHURCH

HILTON GARDEN INN ISTANBUL GOLDEN HORN



HILTON GARDEN INN ISTANBUL GOLDEN HORN



The first **Leed Gold Certified Hotel outside of the USA**



HILTON GARDEN INN ISTANBUL GOLDEN HORN

- First and only branded Hotel on the Golden Horn.
- The only Leed Gold Certified Hotel outside of the USA.
- With 210 rooms Capacity



- Opening date: December 2011
- Winner of Arkiparc 2012 Award in Category of Best Hotel Architecture in Turkey
- Expo Real - 2012 "John Jacob Astor" Award
- "Environment Friendly Green Buildings 2013" Award
- "Holidaycheck Quality Selection 2012" Award



The Hotel is called **“Phantom Hotel”** due to its harmony with the environment



HALIÇ CONVENTION CENTER



- Opening date: September 2009
- 102.000 m2' construction area - 16.000 m2 outdoor-open area
- Four main buildings which linked together.
- The Sadabad, The Towers, The Pera, The Golden Horn.
- Capacity of up to 30.000 people

MUSEUMS

MINIATURK



- Opening date: May 2003
- World's biggest open air model city exhibition area.
- Includes 15.000m² of model City space - 40.000m² green field park area, 2.000m² pool and water way and 3.500m² indoor area.
- Total of 120 current work of art, 57 works from Istanbul, 51 from Anatolia and 12 from old Ottoman territories.

RAHMİ KOÇ MUSEUM



- Opening date: 1990
- The first major museum in the field of Transportation, Industrialization and Communication History

SANTRALISTANBUL



- Date of foundation: 1914
- Opening date: 2007
- The first power plant station in the late Ottoman era
- Renovated and converted as a Museum “SantralIstanbul”
- Cultural and artistic events takes place.

İSTANBUL BİLGİ ÜNİVERSİTİ



- Opening date: September 2007
- 118.000 m2 land
- 13.500 student

UNIVERSITIES

İSTANBUL COMMERCE UNIVERSITY



- Opening date: October 2012
- Library with a capacity of 124,000 books, open every day and every hour at night.
- 39.000 m2 closed area
- 5.500 student



KADİR HAS UNIVERSITY



- Opening date: February 2002
- 3000 students
- It is located on Byzantine city walls
- Used as a Tobacco Factory in 1900 years.
- Today, used as univercity building.





EYÜP SULTAN AREA



- Situated in the district of Eyüp , outside the City Walls of Constantinople.
- Built in 1458, being
- The first mosque constructed by the Ottoman Turks following the Conquest of Constantinople in 1453.



EYÜP GOLDEN HORN BEACH PARK & GREEN OPEN SPACES AT WATERFRONT



- Opening date: April 2012



PIERRE LOTTI HILL



- Opening date: 1997
- One of the point of interests in Istanbul tourism
- Focus for local and foreign visitors.





FESHANE



- Opening date: 1826
- Build by Sultan II. Mahmut for manufacturing military dress for Ottoman Army.
- Today used as Convention, Exhibition and Activity ground.



SOME IMPORTANT ARCHITECTURES

BAHARİYE MEVLEVİHANESİ



- Opening date: 1877
- The most important “sufi” center of the Ottomans Mystical Culture.
- Continuation of Hüseyin Pasha’s Mevlevi house (1622)

NATIONAL ARCHIVE



- Opening date: September 2013
- Consisting a library, a convention centre, an archive storage, and exhibition building.
- 100 million historical documents and 370 thousand records of Ottoman archive.

SOME IMPORTANT ARCHITECTURES

FENER BALAT HOUSES



- Historic quarter of old Istanbul with traditional Ottoman Houses
- Has its name from the Golden Horn lighthouse lantern.

FENER RUM MALE GYMNASIUM



- Opening date: 1454
- "Academy of the Patriarchate"
- Located in Fener district of Istanbul,
- Designed by architect Konstantin Dimadis .
- Built on the top of the fifth hill.

SOME IMPORTANT ARCHITECTURES

BULGARIAN CHURCH



- 19th Century Bulgarian Church.
- One of the earliest kind steel and prefabricated building in the World.

GOLDEN HORN SHIPYARD



- Founded in 1455 by the Conquerer Fatih Sultan Mehmet.
- With its 3 dry-dock , 3 workshop buildings, original doors and fountain, carrying 550 year of Ottoman Navy culture and industrial heritage.
- The oldest shipyard in the world and still maintaining the functionality.



OFFICAL BUILDINGS

AK PARTY HEADQUARTER



- Opening date: 2003

MUSIAD ASSOSIATION OF ENTREPRENEURS

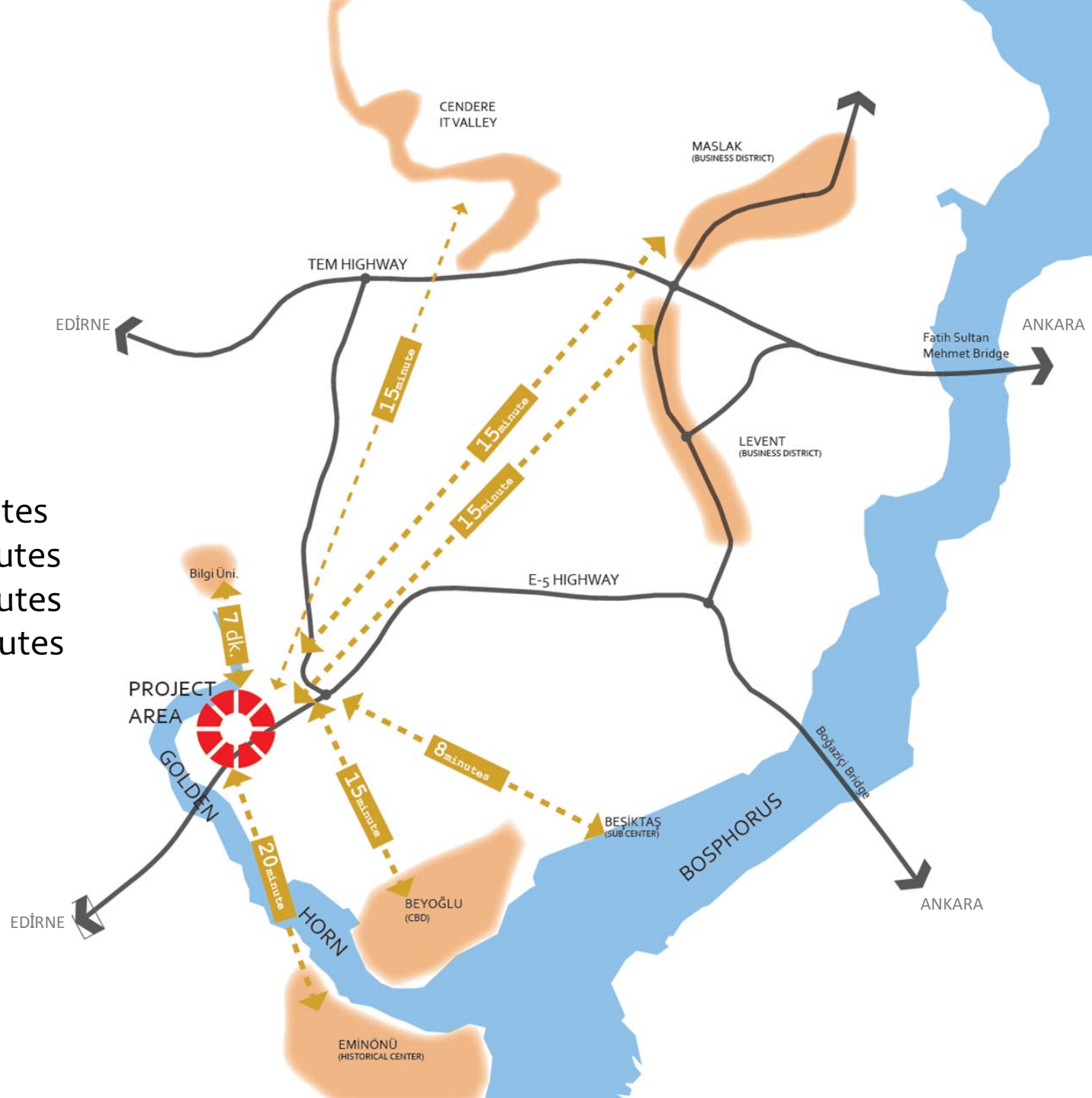


- Opening date: May 1990
- 3300 active members

TRANSPORTATION

TRANSPORTATION SYSTEMS





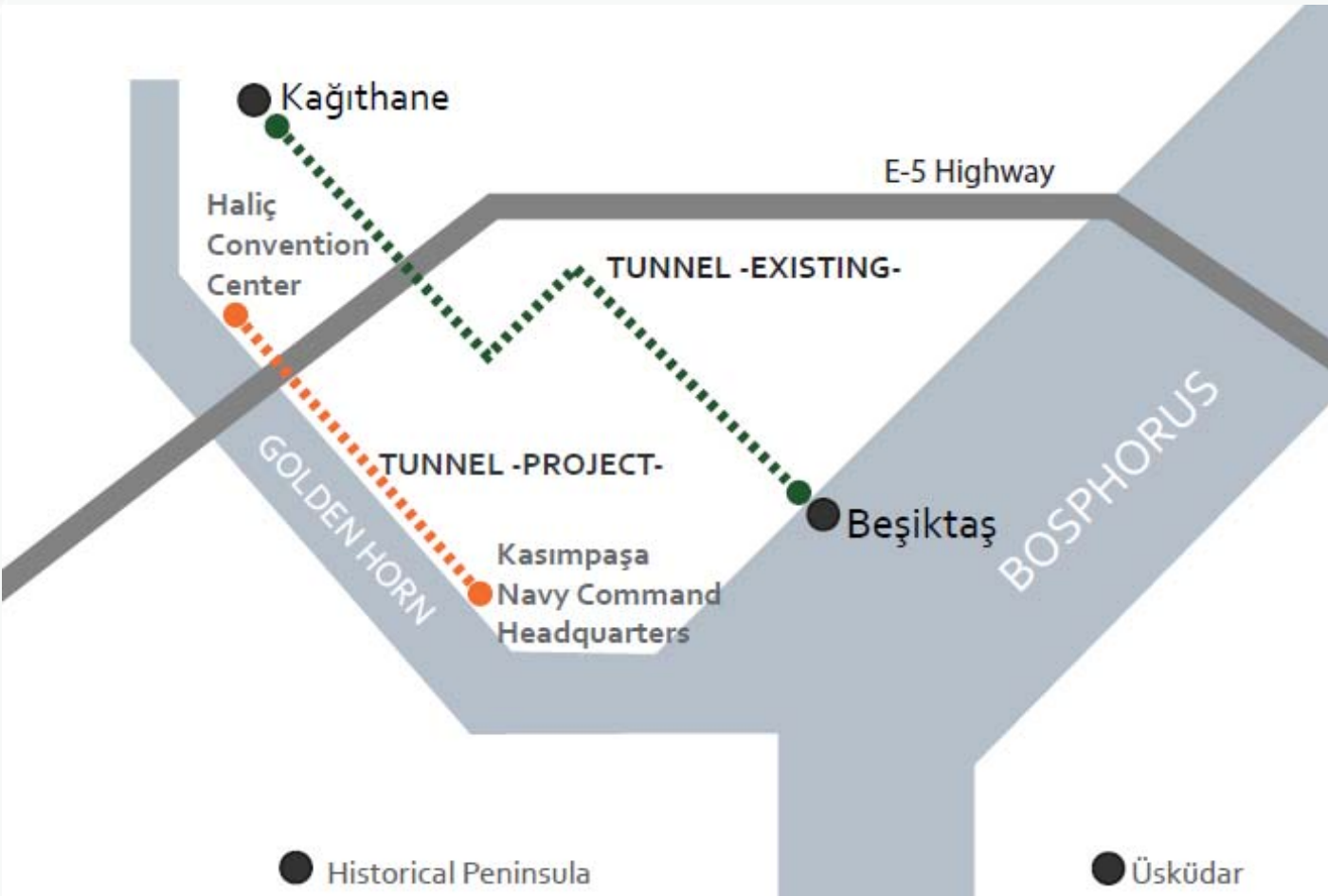
Distance to;

- Beyoğlu _____ 15 Minutes
- Eminönü _____ 20 Minutes
- Levent _____ 15 Minutes
- Maslak _____ 15 Minutes

İSTANBUL RAILWAY NETWORK MAP



TUNNEL



- Distance to Taksim Square is a just 8 minute through Kağıthane-Beşiktaş Tunnel connections.

GOLDEN HORN PIER



Fener Pier



Hasköy Pier



Sütlüce Pier



Routes

- Haliç, Sütlüce, Hasköy, Kasımpaşa, Karaköy, Eminönü, Saray, Eyüp

SEA TAXI



Routes

-Anadolu Hisarı, Anadolu Kavağı, Arnavutköy, Bakırköy, Bebek, Beykoz, Beylerbeyi, Bostancı, Burgazada, Büyükada, Çengelköy, Çubuklu, Eminönü, Emirgan, Heybeliada, İstinye, Kandilli, Kartal, Kınalıada, Küçüksu, Kuzguncuk, Moda, Ortaköy, Paşabahçe, Rumelikavağı, Sarıyer, Yeniköy

METROBUS



- Routes:**
- Beylikdüzü – Avcılar
 - Avcılar Zincirlikuyu, Avcılar – Cevizlibağ
 - Cevizlibağ – Söğütlüçeşme, Zincirlikuyu - Söğütlüçeşme

GOLDEN HORN METRO LINE



- Opening Date: February 2014
- Length: 936 m. Connecting both sides of Golden Horn, integrated to other railway systems
- 1 million passenger are carried a day.

SEA BIRD



- Routes: Alaçatı, Bodrum, Bozcaada, Ayvalık, Bursa, Kocaeli, İzmir, Hisarönü
- Soon: Gökçeada, Çanakkale, Marmaris, Antalya, Göcek, Efes

SEA WATER TUNNEL



- Total length is 5050 meters.
- Between Çayırbaşı and Ayazağa.
- Opening Date: October, 2012



EYÜP CULTURAL CENTER



- Opening date: April 2013
- Land Area: 18,590 m² - Total Construction Area: 6,350 m²
- Two large meeting rooms with the capacity of 800 people for each.
- Includes shops, cafeterias and restaurants. events and exhibition rooms.



VIALAND ENTERTAINMENT CENTER



- Opening date: May 2013
- Turkey's first international mega theme park, exhibition and shopping center
- Located in the municipality of Eyup and Gaziosmanpaşa, 600,000 square meters of land.



ORGANIZATIONS

ORGANIZATIONS

GOLDEN HORN BOAT FEST

DÜNYANIN EN GÜZEL, EN ÖZEL TEKNELERİ, ONBİNLERCE DENİZ VE TEKNE TUTKUNU HALIÇTE OLACAK, SİZİ DE BEKLİYORUZ...

DÜNYANIN EN GÜZEL, EN ÖZEL TEKNELERİ, ONBİNLERCE DENİZ VE TEKNE TUTKUNU HALIÇTE OLACAK, SİZİ DE BEKLİYORUZ...

- 2013 Model, Stoktan Teslim Tekne Modelleri
- FIRSAT PONTONU...İkinci El Tekne Seçenekleri
- Tekne Ekipman ve Aksesuarları
- Su Sporları Malzemeleri
- Charter ve Broker Firmaları

HALIÇ
KONGRE MERKEZİ

9-12
MYS
2013

9-12
MYS
2013

9-12
MYS
2013



- Festival of Dragon Boat Racing
- Team Redbull Extreme Sailing
- Air Show

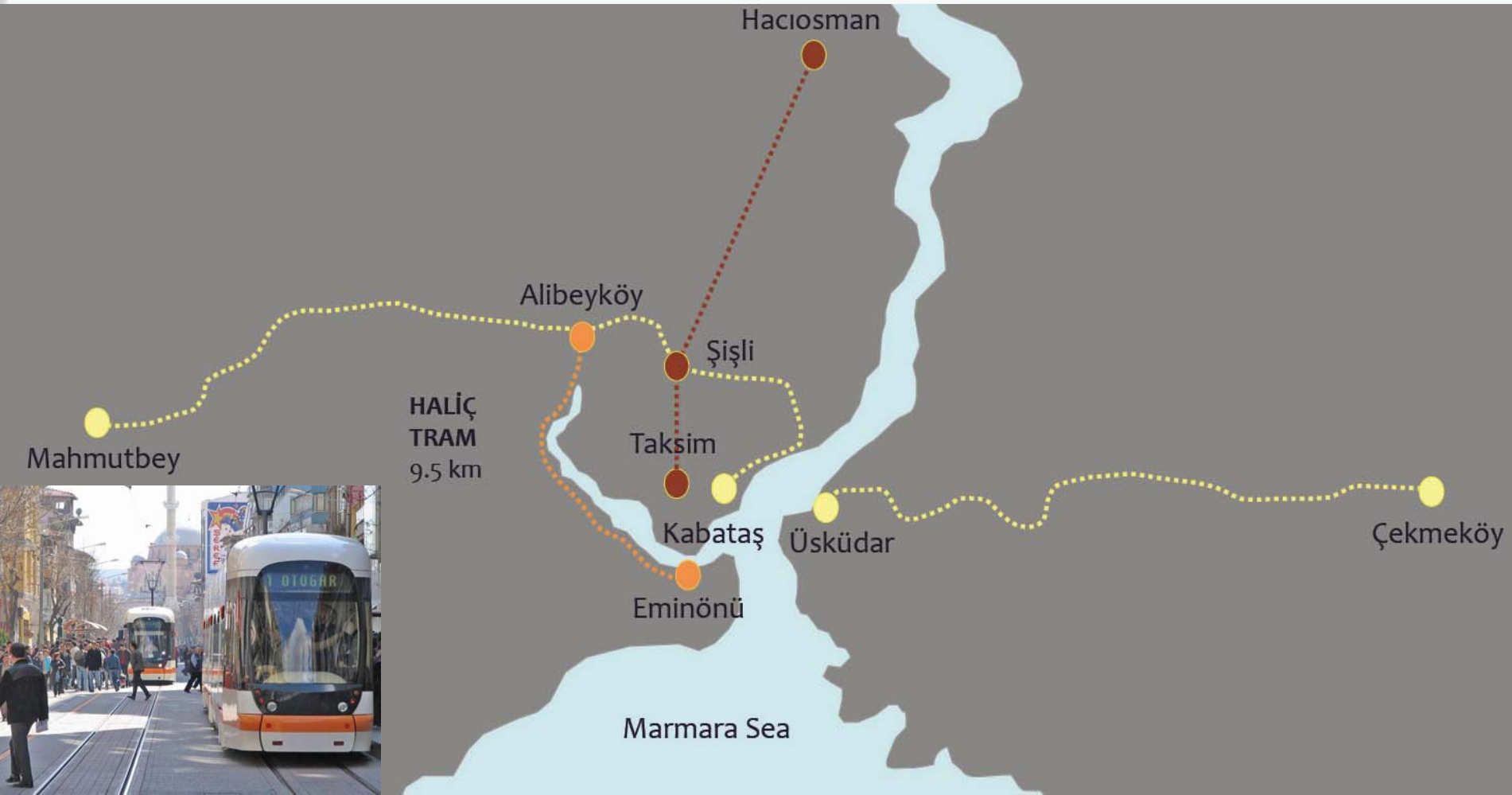
PROJECTS

CENDERE VALLEY PROJECT



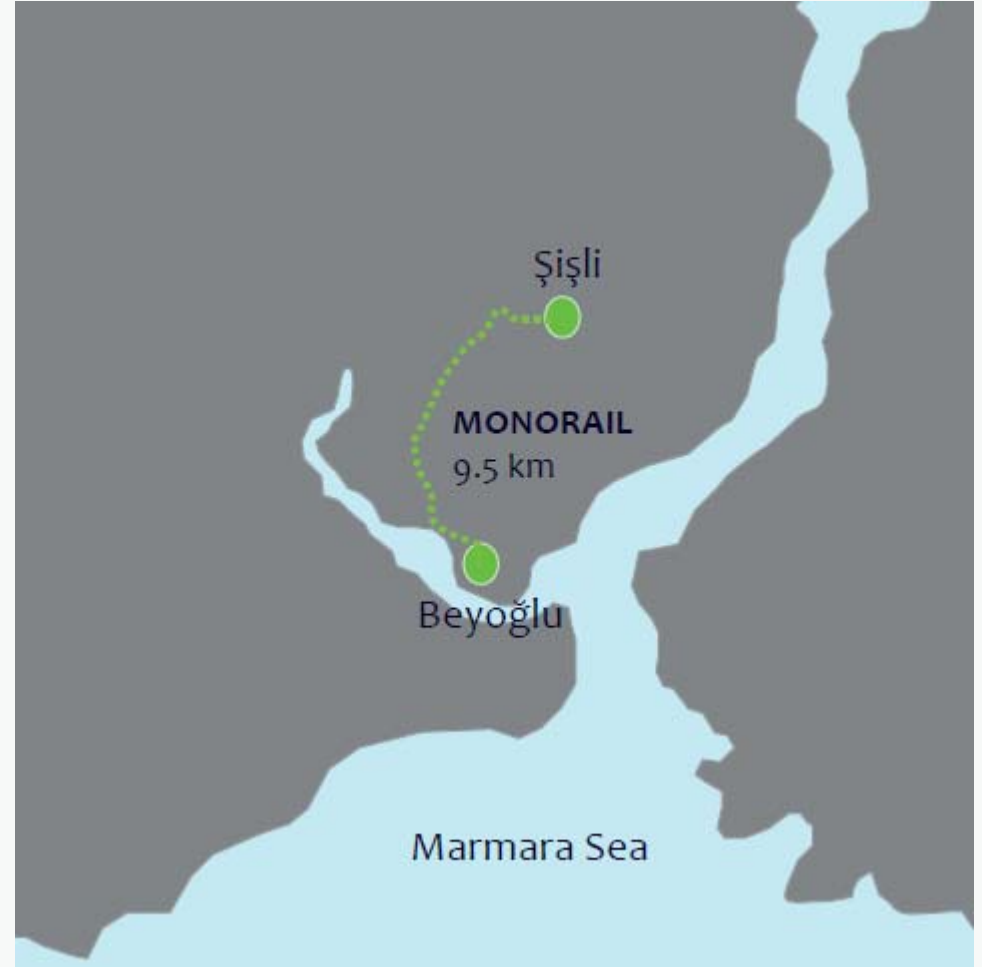
- 350 hectares.
- Including information, education and R&D facilities.

HALIÇ TRAM



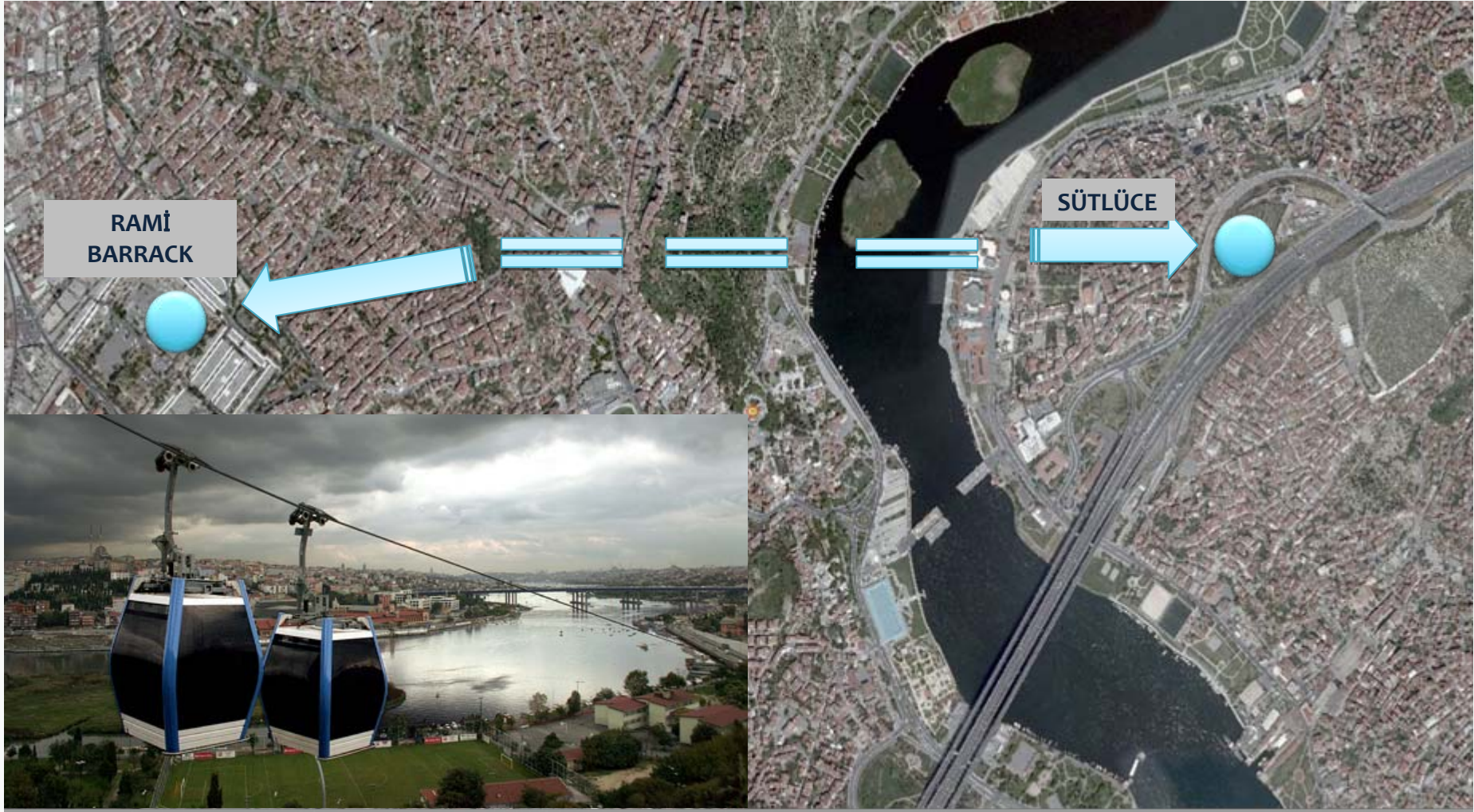
- In tendering phase
- Route: Eminönü - Eyüp - Alibeyköy
- Capacity (person/h/direction); 15.000 person.
- Will be integrated with Alibeyköy- Beşiktaş metro line.

BEYOĞLU - ŞİŞLİ MONORAIL PROJECT



- Capacity (person/h/direction); 9.000- 33.000 person.
- In project phase

EYÜP - SÜTLÜCE TELEFERIC LINE PROJECT



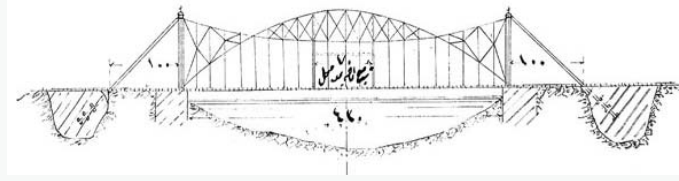
- In project feasibility phase

KASIMPAŞA - SÜTLÜCE TUNNEL PROJECT



- In construction phase
- Will be opened within 2013
- Will be integrated with Atatürk Bridge, Fatih Sultan Mehmet Bridge and Kağıthane tunnel through highways

LEONARDO DA VINCI BRIDGE



BAHARIYE

HALIÇ CONVENTION
CENTER

CENDERE- HALIÇ BOAT TRANSPORTATION PROJECT

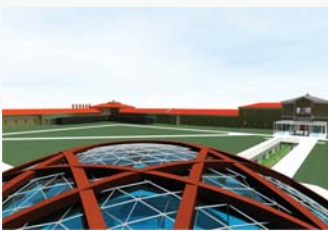


HALIÇ

CENDERE



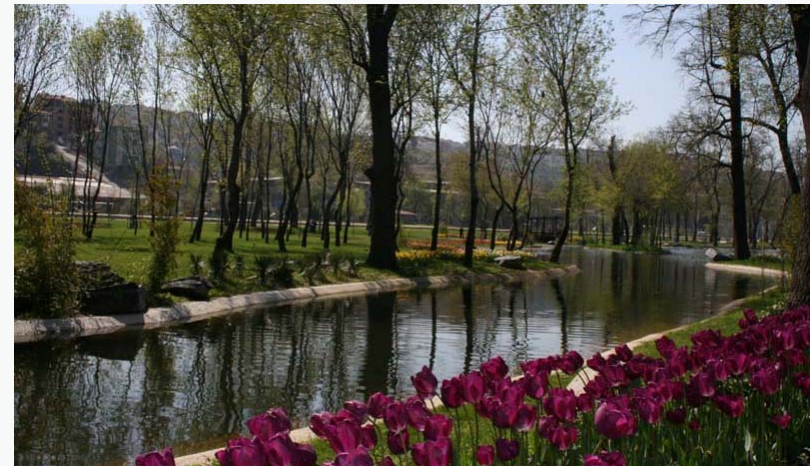
“RAMİ BARRACK” CULTURAL CENTER PROJECT



- First built in 1757-1774.
- Renewed and enlarged in 1828-1829.
- Located on 220,000 square meters of land.
- Will be transformed into city museum and the largest library of Turkey.



THE SADABAD PROMENADE AREA



- Originally used as horse racing and archery area in 1720.
- Renewed and enlarged in 1820.
- Traditional activities like Kite Festival, Bicycle Competition, Archery, Javelin, Wrestling, Hidirellez are revitalized by Kağıthane Municipality.



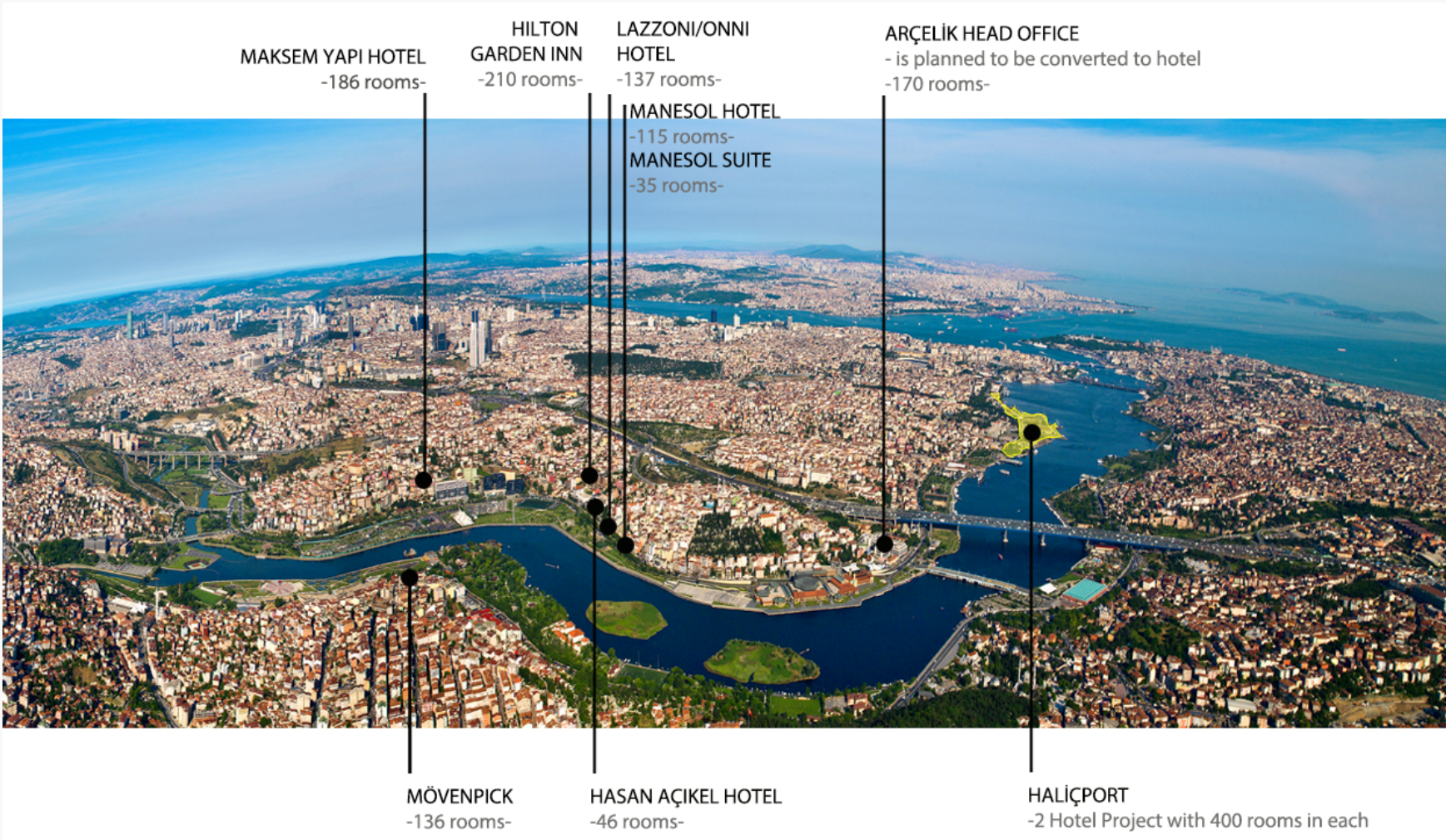
HALIÇPORT



- 2 HOTELS WITH 5 STARS
- 2 MARINAS FOR YACHTS
- SOCIAL AND CULTUREL AREAS
- SHOPPING CENTER
- RESTAURANTS & CINEMAS
- CONGRESS CENTER

- 25 ha. area.
- It was tendered in July 2013
- Will include marinas, hotels, shopping center, social and cultural facilities

HOTEL PROJECTS



- Approximately 1.500 bed capacity will be created in Haliç



AMPLIO / Eski Büyükdere Cad. Park Plaza No:14-3B 34398 Maslak - İstanbul